

Contact an Adaga specialist
 inbox@adagasolutions.com
 +1 (403) 899-3338

Stream

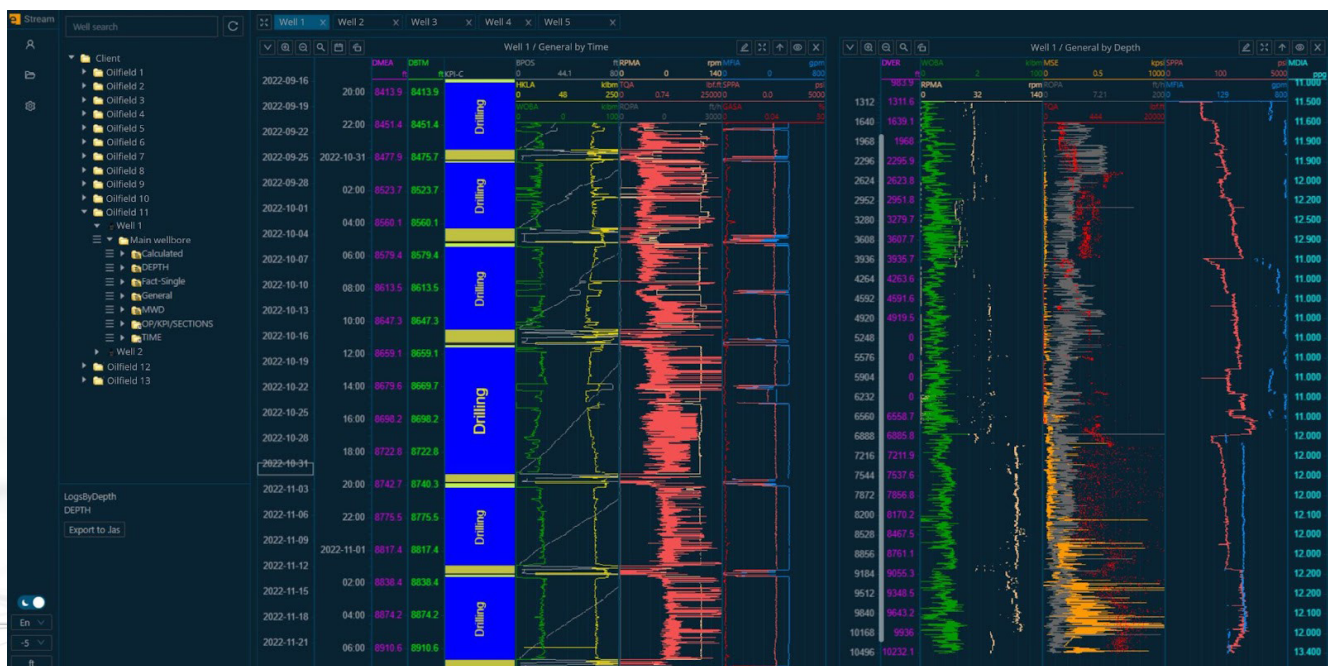
eStream is a streamlined, intuitive solution designed to enhance real-time data integration from your rig to the office. It supports various data types such as mud logs, drilling parameters, and LWD/MWD data, effortlessly converting them to WITSML for unmatched compatibility and ease of use. By delivering unparalleled real-time data accuracy and operational insights, eStream facilitates quicker decision-making and significantly mitigates the risk of expensive drilling mistakes.

Adaptable for installation on various platforms — whether it's a rig, in-house, rented server, or cloud-based system — eStream ensures continuous data streaming and easy access through any web browser, enhancing operational efficiency and productivity.

eStream Key Features

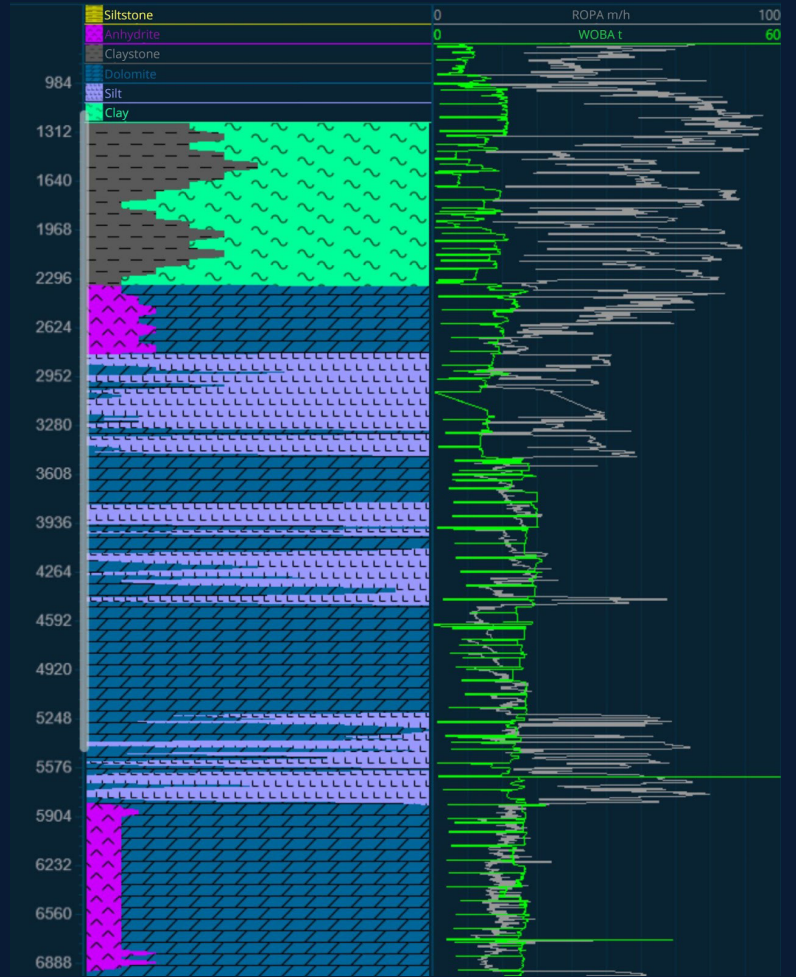
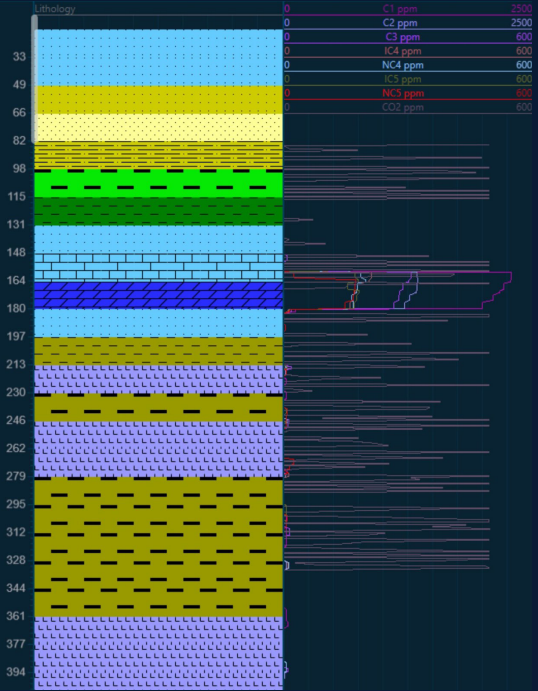
➔ Quick Access To Well Data

A simple tool for visualization of historical and real-time data transmitted via WITSML with fast download speed.



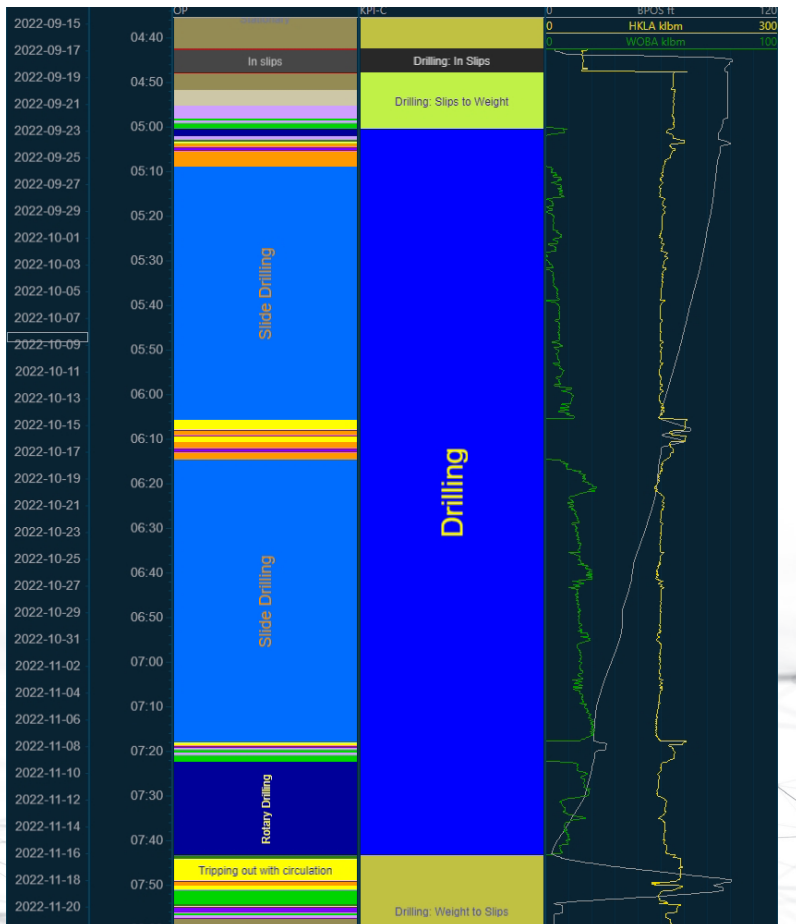
→ Drill Cuttings Data Analysis

You can visualize drill cuttings data, including percentage and lithological composition, gathered at the well site.



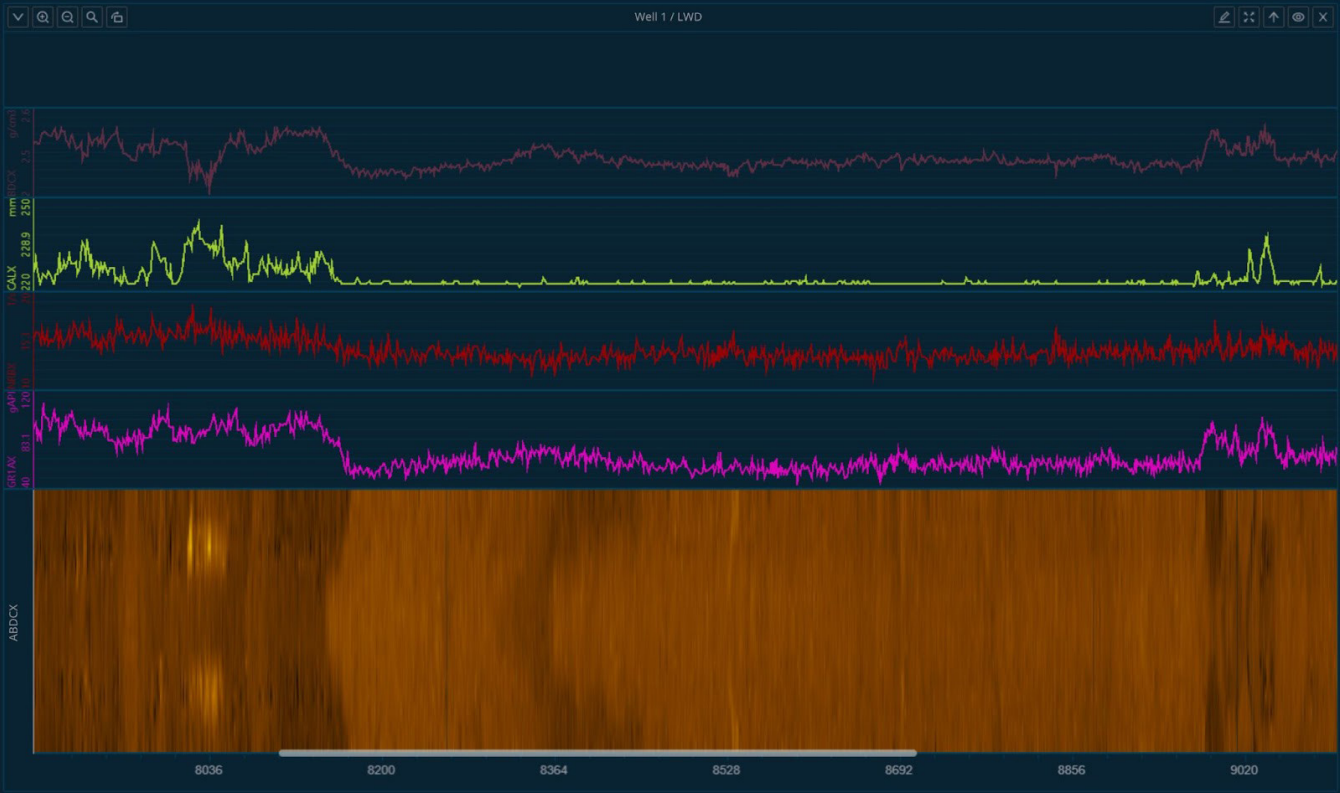
→ KPIs & Operations Identification

Automatically identify key performance indicators (KPIs) and operations, and visualize them in a clear, discrete format.



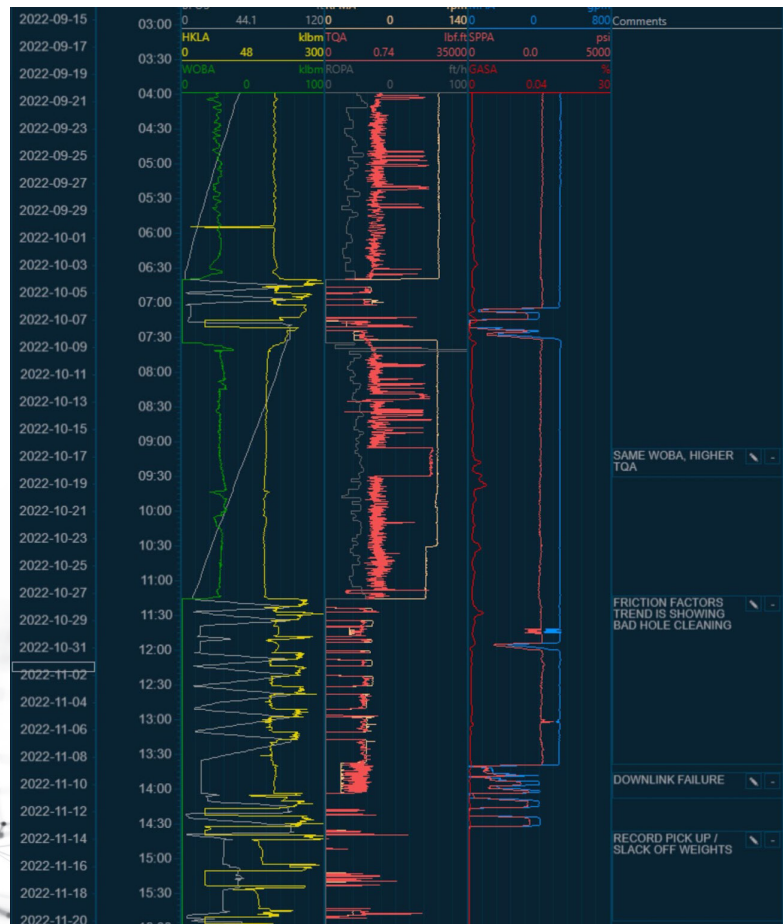
→ MWD/LWD Data Analysis

Conduct comprehensive MWD/LWD data analysis to optimize drilling performance and decision-making.



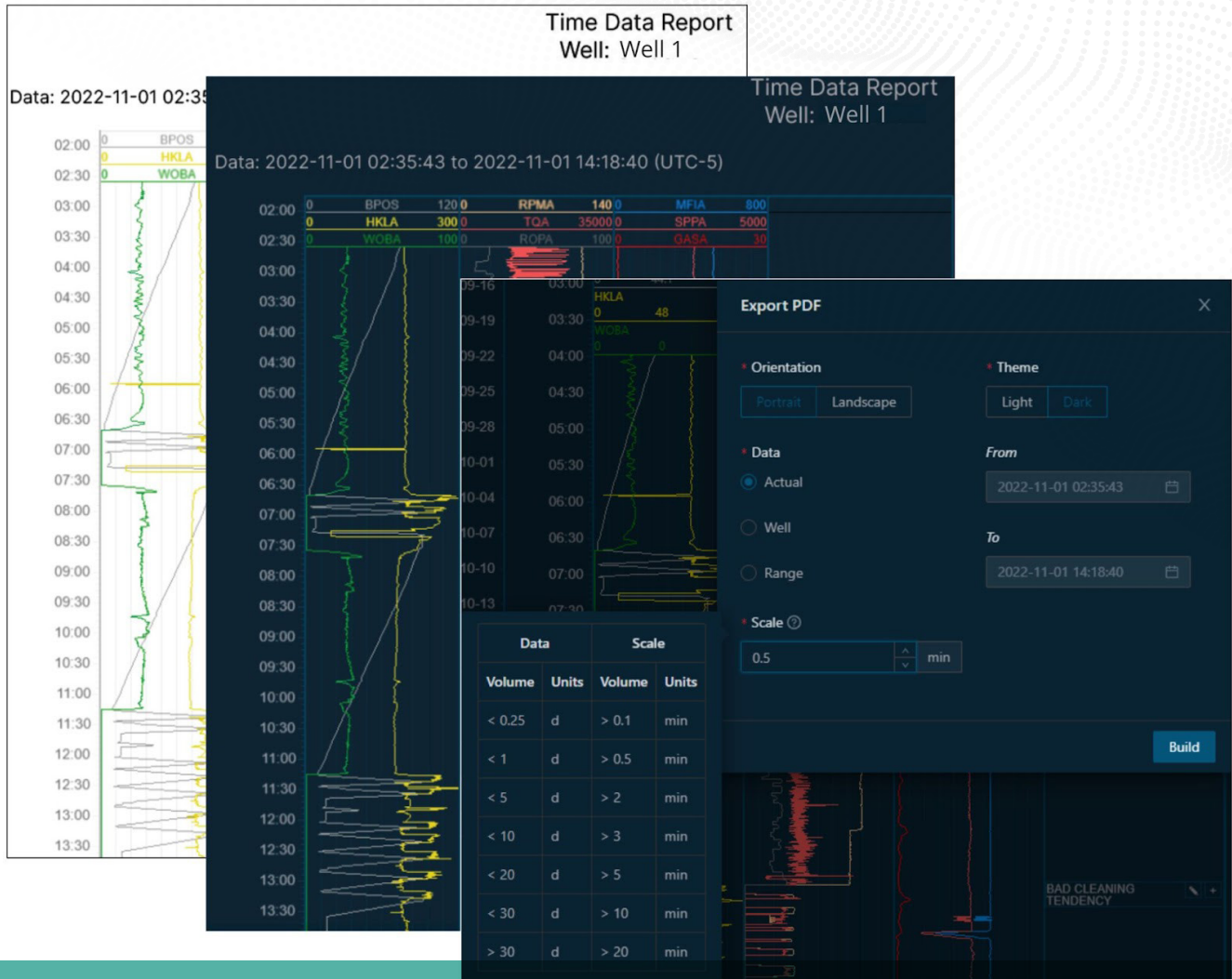
→ Interactive Commenting on Time and Depth Boards

You can view (including external application comments) and post comments on time and depth boards directly through the application.



→ Flexible Data Export Options

Export your data in .pdf and .las formats for enhanced reporting and analysis flexibility.



Ready To Transform Your Drilling Operations?

Take the first step towards unparalleled operational efficiency.

Contact An Adaga Specialist Today

inbox@adagasolutions.com

+1 (403) 899-3338